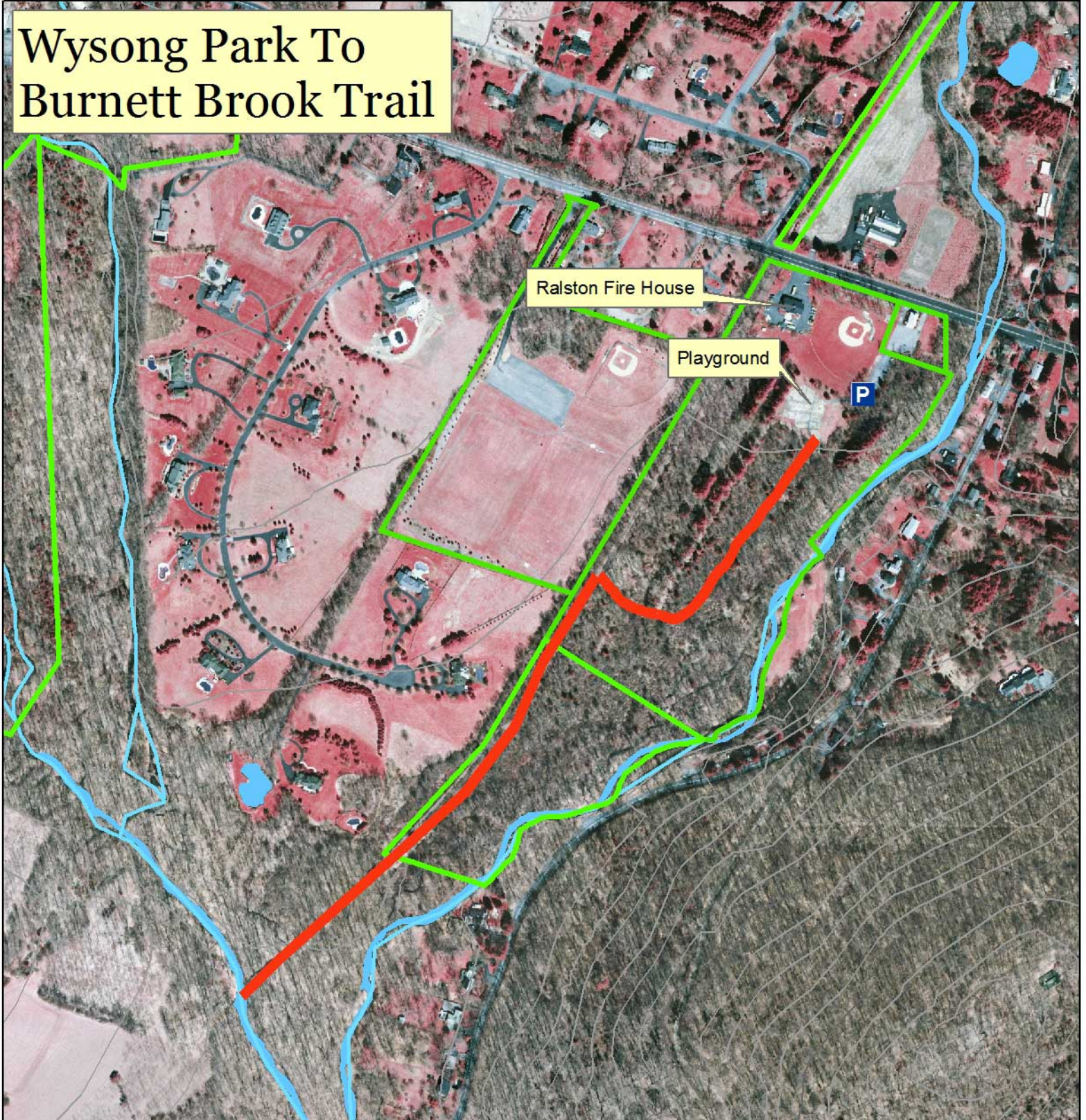


Wysong Park To Burnett Brook Trail



Wysong Park To Burnett Brook Trail - 1 Mile/Easy

How to Get There/Where to Start

This trail is located behind the Ralston Playground. Park in the playground lot and head to the grassy trail to the left of the playground.

Trail Description

The Burnett Brook Trail is a great hike for little kids. It starts behind the Ralston Playground and continues to the AT&T right-of-way, which was the former railbed for the "Rockabye Baby" railroad. When you get to the AT&T right-of-way turn left. Once you reach Burnett Brook, turn around and follow the same trail back.

What to Bring

Cell Phone, Snack Foods, First Aid Kit, Sunscreen, Backpack, Water Bottle, & This Map
Call 911 for Emergencies.

