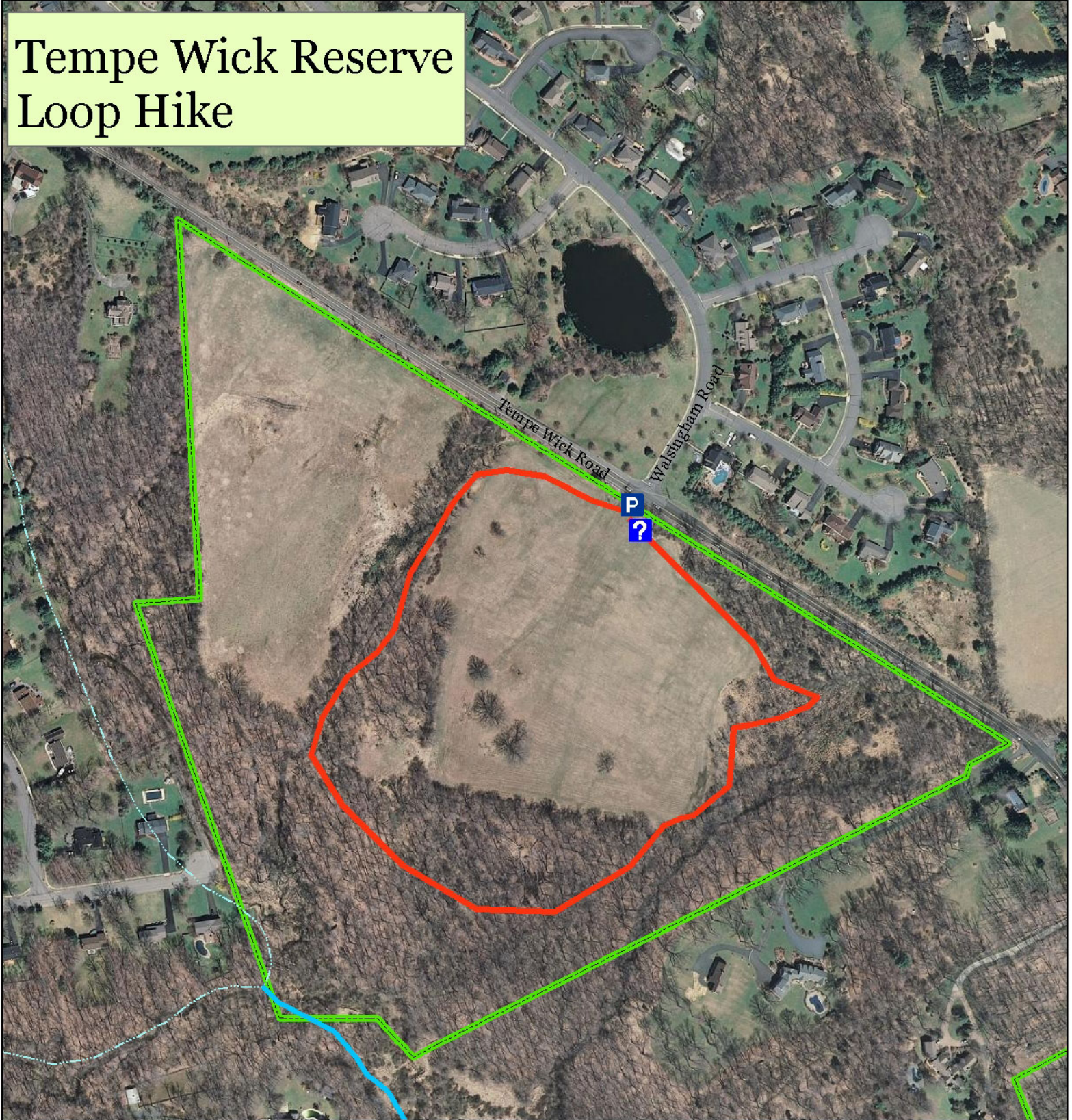


Tempe Wick Reserve Loop Hike



Tempe Wick Reserve Loop Hike - 0.7 Miles/Easy

How to Get There/Where to Start

Entrance to Tempe Wick Reserve is on Tempe Wick Road opposite the Walsingham Road entrance to Drakewick.

Trail Description

This is an easy, level hike that winds its way through newly-created native prairie habitat. Follow the marked loop trail that leads from the parking area.

Legend

 Information Kiosk  Loop Hike

 Parking Area

What to Bring

Cell Phone, Snack Foods, First Aid Kit, Sunscreen, Backpack, Water Bottle, & This Map. Please note that trails are rustic and surfaces can be uneven. Call 911 for Emergencies.

0 250 500 1,000 1,500 2,000 Feet

